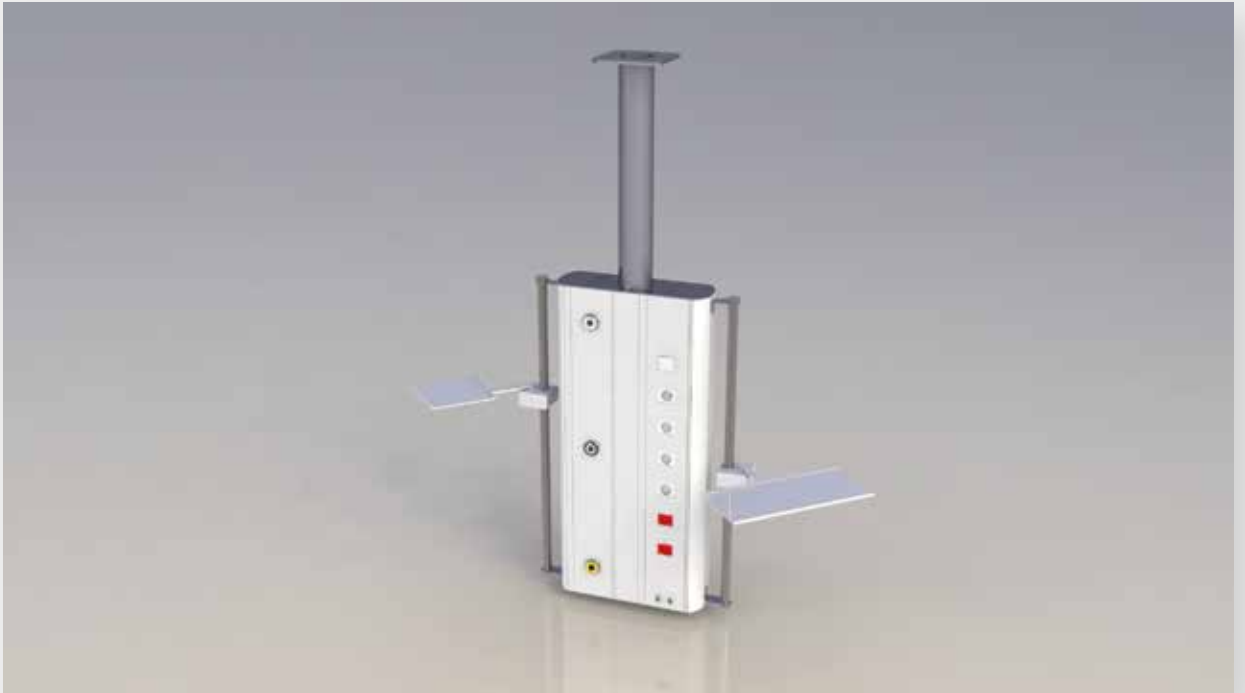


Vertical Column

Traian

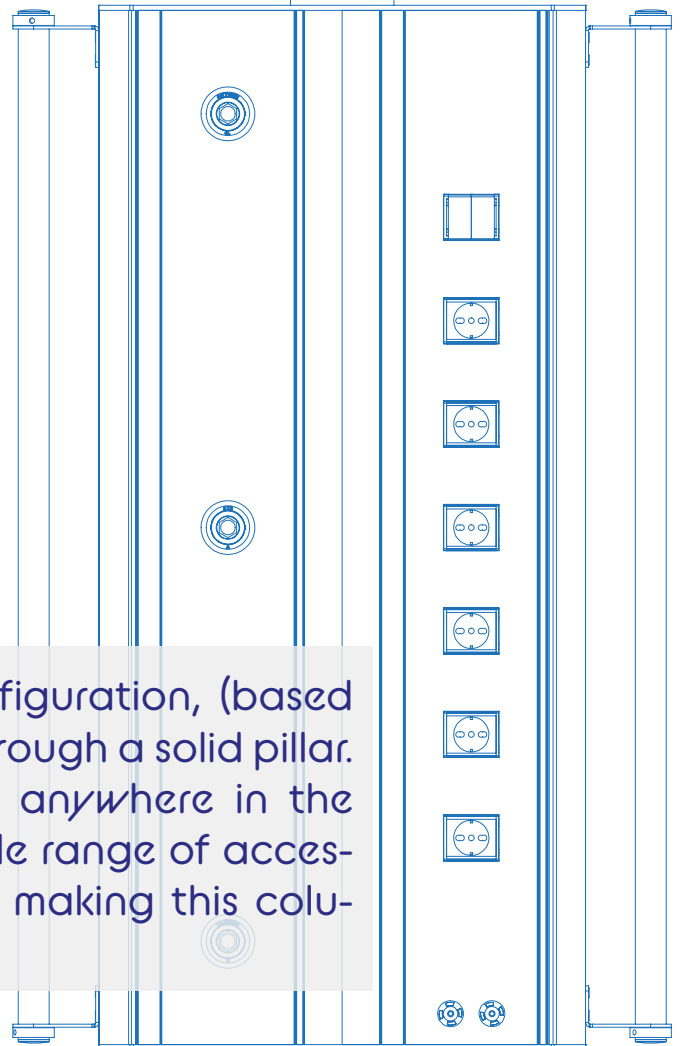


DATA SHEET

TRAIAN vertical columns bed head unit is greatest example of how our attitude is oriented to the best results with the lowest costs impacts.



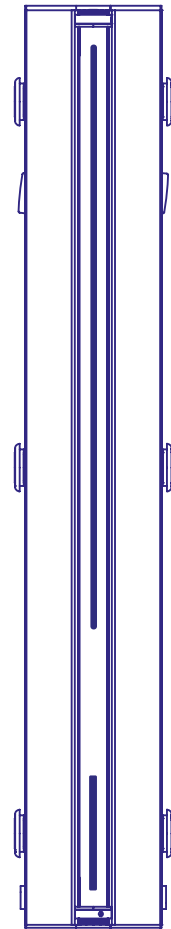
TRAIAN can rotate freely to 330° configuration, (based on the requests) fixed on the ceiling through a solid pillar. In this way TRAIAN can be mounted anywhere in the intensive care department with a wide range of accessories and rotating equipment carries making this columns.



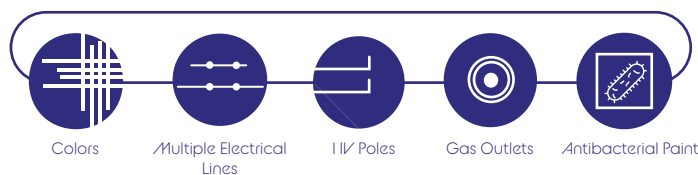
The medical staff can always have easy access to all equipment. This reduces to the minimum the workload and enhances significantly the workflow.

LIGHTING OPTIONS

All the LEDs used passed the highest electrical safety standards and the diffuser covering the illuminating part has been chosen with a class of fire resistance greater than required by current standards. The electrical supply points present, which can be built on separate and individually protected lines to keep safe patients and hospital staff, follow different standards such as CEE 7/4 (Schuko type F), UNEL 2P + T 10 / 16A bypass, the French two-pole type E, or BS 1363.



CONFIGURATIONS



TRAIAN can be equipped with two standard 30×10 rail that is assembled on both sides of the profile. Hand-set (two pushbuttons) for lighting control, equipotential socket, pull switch RJ11 and RJ45 data connectors, and other equipment that can be supplied on request. Plates and switches are available also with antibacterial treatment.

Custom Colors



Technical Data

Color: *White or Customizable Color on Request*

Paint: *Antibacterial*

Gas Outlets: *All EU Standards Available*

Body: *1008 x 470 x 149 mm*

Appros Weight: *38 Kg*

I V Pole: *992 x 30 mm*

Data sockets: *HD/MI, Rj45, Rj11, USB, Equipotential and varius data service available*

Electrical sockets: *all EU standards available*

Lighting: *LEDs for ambient and night light.*

Technical Data

